







## Fascination of Climbing

Whether as a child on the playground or as a real pro in a sports centre, climbing is enjoying great popularity with good cause: climbing is something good for both, the body and the mind! Not only strength, perseverance and agility are trained, but also the ability to calculate proactively and to think creatively. Particularly complex incidents are instantly grasped. Climbing is much more than a mere leisure activity. It is a playful way to wisely advance you during any phase of life and on any level. Concrete® is specialized in climbing elements of concrete. This material is more functional, more durable and more versatile than any other solutions.



## Concrete® Young

From an early age sports and exercise cannot be replaced by anything else, because the development of the body and the mind is fostered. Climbing has a positive effect on a person's strength, perseverance and agility as well as on the youngster's ability to concentrate and learn.

## Boulder Rocks

Initially, bouldering was only used as a means of training for extended climbing tours. A boulder facility is, however, also suitable for playgrounds aimed at children and young people, because when bouldering you are climbing sideways at a height from which you can easily jump off any time. Concrete's® boulder rocks were designed for exactly this purpose.





## Boulder Walls

There are many different needs and requirements with regard to a climbing facility. Therefore we engineered our boulder walls to meet most of the users' demands. The elements can be combined with each other to provide varied climbing experiences even with little place and within reasonable funds.

## Rope Climbing Facilities

Vertical mobility and the play of power with gravitation are just two of the ever fascinating things of rope climbing. However, only the option to exercise rope climbing without the often far away mountains made this sport's great popularity possible at all. To this day rope climbing did not lose its attractiveness. On the contrary! Nowadays just about every well-equipped sports centre is offering a rope climbing facility.



# Surfaces

## More than just good looks

Depending on its texture a climbing element's surface provides a very particular climbing feel. Therefore most of the Concrete® climbing facilities are available with four different surface executions:

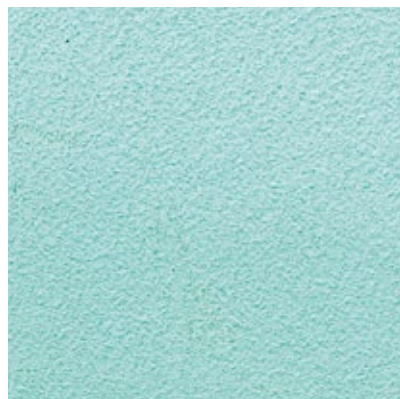
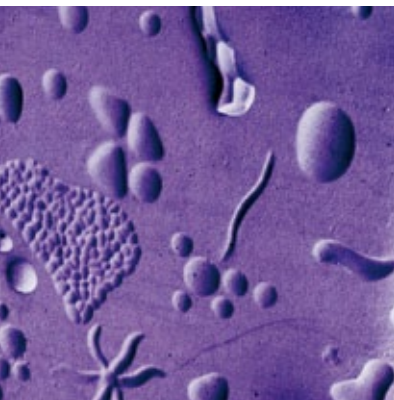
**Start** – even surface

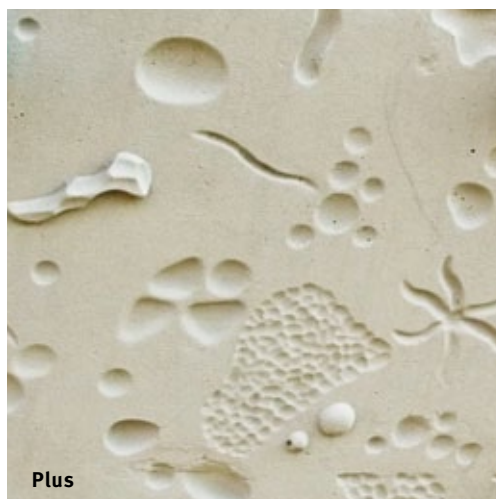
**All-round** – slightly structured surface

**Plus** – strongly structured surface

**Special** – replica of an alpine rock face

As climbing has its origin in nature our „Special“ surface is made from a real rock face cast. And with our concrete we even succeeded in preserving a rock's durability. Another important factor is the CREFIX® coating applied to the surface, which always provides the climber with the necessary grip.





## Colours

### Everything is possible

You have free choice for the colour design of your Concrete® climbing facility. Common RAL shades can be recreated in true colours irrespective of the surface execution. A climbing facility's colour can be adapted to an existing colour concept, or may be used as a colourful accent for architectural or infrastructural purposes, or simply contribute to a better distinguishability of a sports centre.



A close-up photograph of a textured, orange-colored surface, possibly a piece of playground equipment. In the center, there is a small, dark blue, circular object with a faceted, gem-like appearance. The background is a soft, out-of-focus green.

## Concrete® Young

Concrete® Young stands for a line with a clear concept: playground and sports elements have to be fun, have to feel good and have to be able to withstand a lot. To sum it up: good playground elements must not be boring! They are providing versatile playing options and are stimulating the children's fantasy day by day. A well thought-out playground does not force children into a given strategy but offers room for their very own discoveries, curiosity, thirst for adventure and courage.



## North Rhine-Westphalia (GER)

### Dortmund Zoo, Dormagen

The more than 1,500 animals in the Dortmund zoo were joined by a further three species from the Allgaeu region: a rhino, a lion and a giraffe – all made by Concrete®. They, of course, are enthusiastically accepted by the zoo's little visitors. Or is there any other zoo at which they can ride on a rhino? In Dormagen, also located in North Rhine-Westphalia, a whole caravan of climbing animals was installed: a giraffe, an elephant, a camel, a rhino and a lion are trotting one behind the other. The suitable name for the project in front of Raphael's House is »Noah's Ark«.





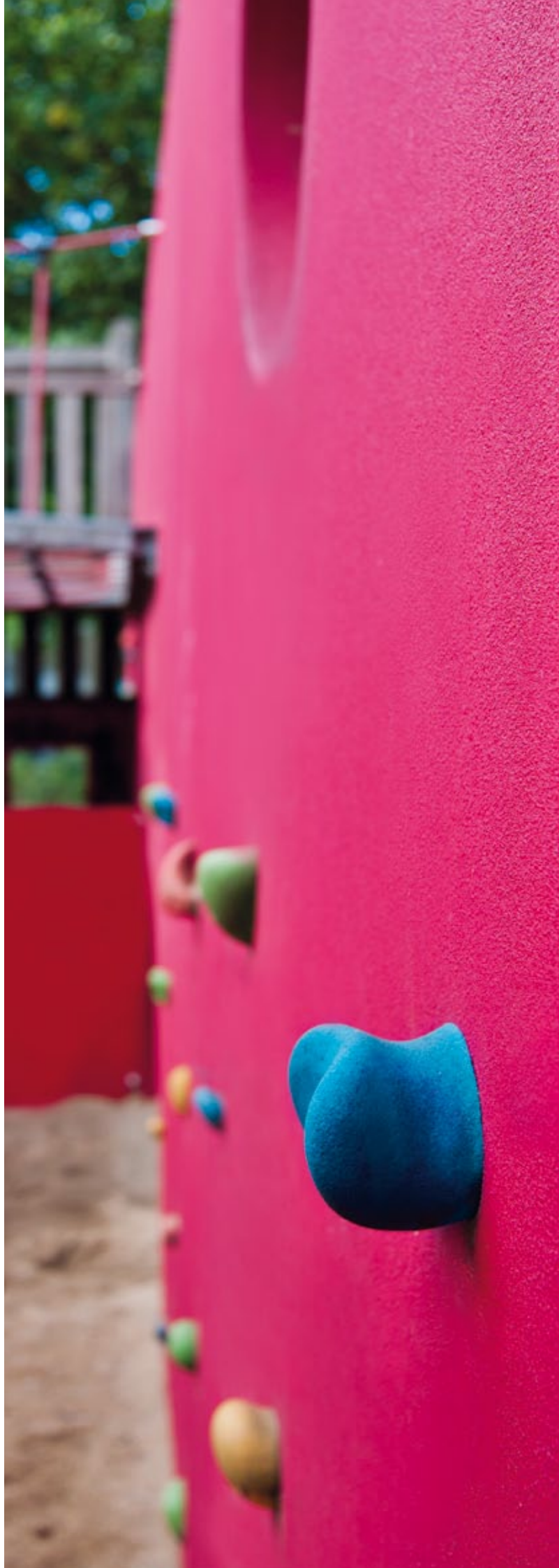


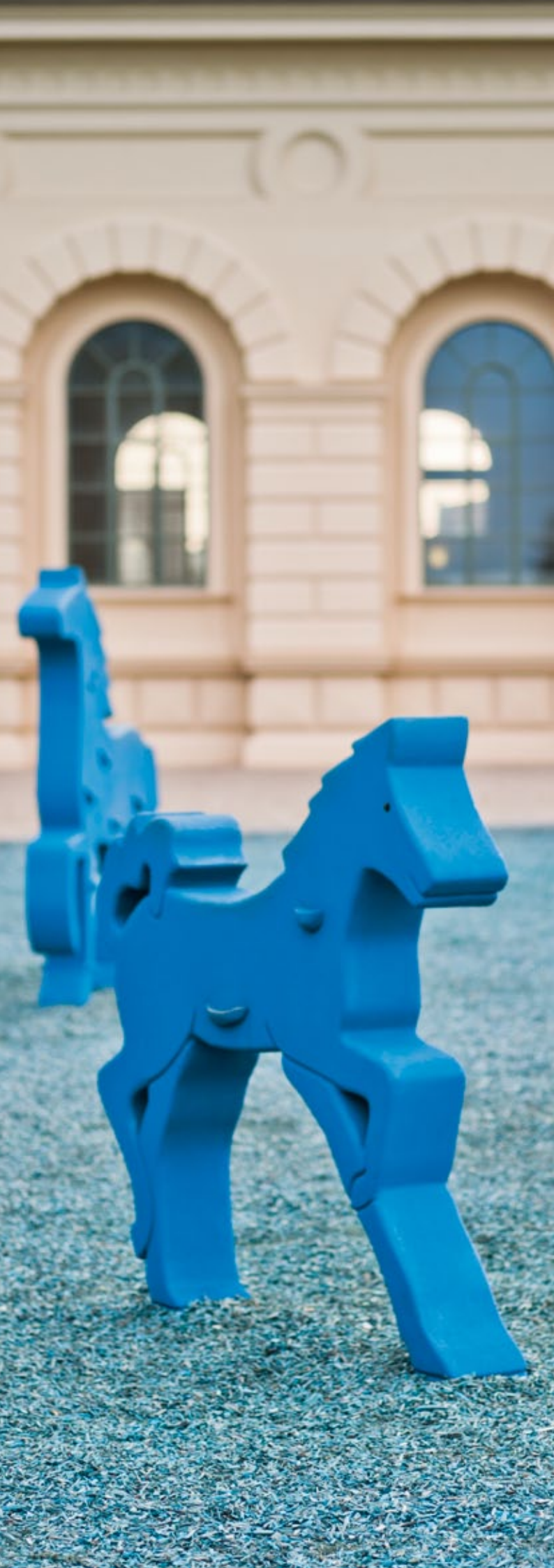
Climbing walls combined with wooden playground elements by another manufacturer were installed on Edisonplatz in Dusseldorf. This playground was planned by selected local partners and it shows that the climbing elements by Concrete® can be ideally combined with other playground elements. That way you can keep open any options for an extension or a new design right from the start.

## **Dusseldorf, North Rhine-Westphalia (GER)**

**Edisonplatz**









## Schwerin, Mecklenburg-West Pomerania (GER)

National Horticultural Show 2009

The climbing horses were designed and produced especially for the National Horticultural Show 2009 in Schwerin. Horse and rider are decorating the blue coat of arms of the capital city of Mecklenburg-West Pomerania. Perfectly in line with this, the bark mulch, which was used as a falling protection, had also been blue coloured. This project is a particularly good example of how a sports element can not only be harmoniously integrated into a sophisticated environment but also be used to set appealing formal accents.



## Boulder Rocks

Initially, bouldering was only used as a means of training for extended climbing tours. Today, however, this is a very popular sport. Its advantage: it is simple. A boulder wall can be installed just about everywhere and everyone can climb the wall. Furthermore bouldering is not really dangerous as you can only climb up to a height from which you can easily jump off. The falling height of a boulder rock may not be higher than 3 m. Whether in parks, on playgrounds, in gardens, on sports grounds, in school-yards or in other environments: the boulder rocks are always offering an impressive adventure world for children.







A Stones® combination with a suspension bridge was installed on a public playground in Kottingbrunn, right at Vienna's doorstep. As vandalism is an almost unavoidable problem also for the municipality of Kottingbrunn, it was decided to go for a solution that is practically indestructible. That way it is ensured that even after many years and at a high utilisation rate the facility is still perfectly working.

## **Kottingbrunn, Lower Austria (AT)**

**Wasserschlosspark**







Colourful gardens – it's all in the name. In a highly populated residential area near the city of Chemnitz a sports ground and playground was designed to introduce some variety and to revitalize this area. Concrete® supplied a climbing track with three stones and one boulder rock. The stones are all linked with firmly fixed ropes so that it is possible to climb from stone to stone without having to touch the ground.



## Chemnitz, Saxony (GER)

Colourful Gardens







## Dresden-Loebtau, Saxony (DE)

Tharandter Strasse

A tartan landscape of sand dunes rises from an asphalt plain. Already from a distance you can see the four monumental bright blue climbing rocks. Like others, also this facility was designed in cooperation with the neighbourhood's youngsters. This clearly increased their willingness to identify themselves with this facility. As a result, there are neither problems with vandalism nor with loose garbage. And at the same time this residential area was enriched in a charming yet fanciful way.





A photograph of a climbing wall with colorful holds against a blue sky with clouds, with green foliage in the foreground.

## Boulder Walls

Whether as a sculptural enrichment or as an accentuation within a park, as a sound-absorbing barrier in a residential area or simply as a top level sports element, Concrete® boulder walls in shapes of boulder rocks, as stand-alone walls, combi-walls or whole boulder mushrooms are offering almost endless applications. That way a climbing facility can be perfectly integrated into any conditions. Owing to a consistent design children, young people, and amateur and professional athletes will always find playgrounds and sports elements with an outstanding functionality.



## Blaustein, Baden-Wuerttemberg (GER)

Unlimited climbing fun at a length of 6.95 m. The wall's dents and bulges are not only looking good but are also considerably enriching the climbing options. Due to the descending shape of the spiral wall even the smallest climbers can easily achieve their very own peak experience. The spiral wall is much more than just a climbing wall. It can be used as a viewing platform, as a hiding place, as a jumping hill and also as a meeting place with cosy corners.





**Dresden, Saxony (GER)**





This product is a climbing element that is suitable also for very ambitious climbers. The boulder tower offers any options and levels. Due to different gradients and overhangs on the various sides there is something to suit every climber.





The peppy boulder wall located at Archivplatz in Karlsruhe is a real climbing attraction. It has become the meeting place for young and old. The wall consists of four circular modules and offers a great variety of levels and different tracks, which make this boulder wall a serious piece of sports equipment. Users have already marked the sequence of holds for demanding climbing routes with chalk – R and L beneath the holds on the concrete wall. This is one of the signs for the serious and athletic use of this boulder wall. This climbing facility is attracting attention in the bouldering scene even in the internet where it listed in a directory for boulder walls that can be used free of charge.

## **Karlsruhe, Baden-Wuerttemberg (GER)**

**Mathystrasse**









## Munich, Bavaria (GER)

Pelkovenstrasse

This very long and organically shaped climbing wall in Munich also serves as an embankment. It shows that even a demanding piece of sports equipment and playground element can be created from a simple retaining wall.





## Munich, Bavaria (GER)

This three-piece Concrete® climbing facility is located in the middle of a residential area. The creative concept provided a solution to harmoniously integrate it in a subdued way into the urban environment. With a simple colouring concept and corresponding stylistic elements a facility with a highly sculptural appearance could be created that enjoys high acceptance by the residents.







## Pattonville, Baden-Wuerttemberg (GER)

A versatile combination of different walls was installed on the recently equipped premises for children and young people in Pattonville. No matter whether children of primary school age or boulder pros, everyone will be facing their very own challenge. Furthermore this climbing facility is attracting attention also in the bouldering scene and is considered one of the country's best boulder facilities on playgrounds.





It was the Big Palais youth club's youngsters themselves who asked for a boulder wall. The utilisation concept includes the rear side of the climbing wall being used as a graffiti wall. As a result a climbing paradise with two boulder walls and a stone was created on an area of 27 x 6 m. The facility's feature is the rope meshes in between the walls. The falling protection consists of a 40 cm high layer of piled up round grain gravel which serves as a protection from injuries.

## Gotha, Thuringia (GER)

**Big Palais Youth Club**



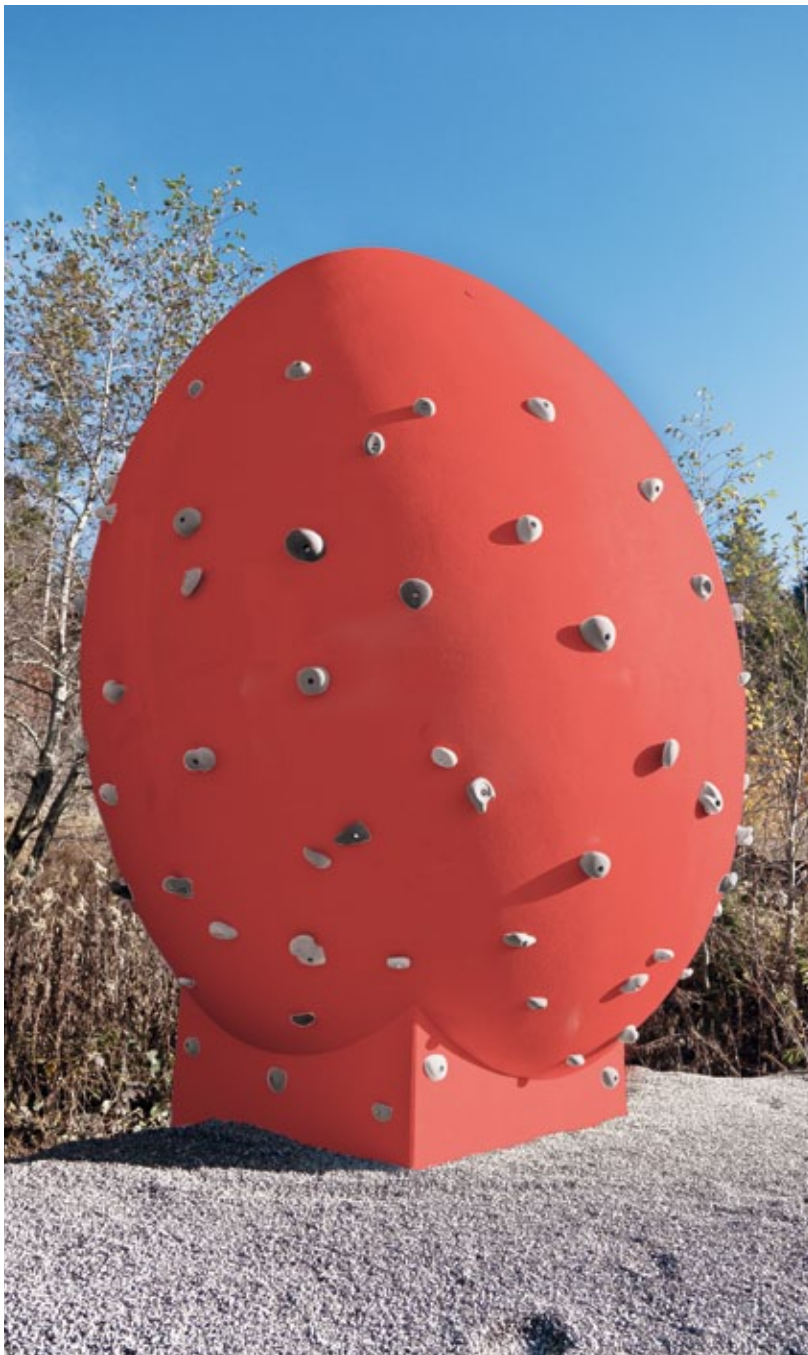




## Special shapes

Climbing elements are often required in very special shapes to also act as sculptures or as landmarks. For such customised products Concrete® is cooperating with reliable partners from the fields of design and architecture.







## Climbing Egg and Climbing Ear

The Concrete® climbing ear unites shape and function in a very appealing way. The sculptural appearance is setting an appealing accent and remains an eye-catcher for adults and children alike. The climbing egg, on the other hand, is creating a very catchy effect due to its shape. Nevertheless this shape represents a perfect climbing object due to its inclination to one side. There are different gradients and overhangs, depending on the side one is climbing.



## Rope Climbing Facilities

### Neuss, North Rhine-Westphalia (GER)

Joseph Beuys School

This rope climbing tower on the Joseph Beuys School's schoolyard offers lots of options to climb in a very demanding and ambitious way. Today also a local club is regularly using this facility, and even the police already used it for training purposes.





## Frankfurt, Oder (GER)

**Federal Border Guard Authorities**

This climbing tower was designed by designer Gunter Wächter for the »Art on Buildings« competition in Frankfurt/Oder on the premises of the then Federal Border Guard Authorities Frankfurt, to be used for service sports purposes. The climbing wall is 10 m high and provides a variety of 5 different levels between 5 up to 6+ not only for amateur athletes but also for ambitious climbers.





## Concrete® Sportanlagen GmbH

Hermann Rudolph Baustoffwerk GmbH is dealing with concrete since 60 years already. Therefore we are able to claim to know all the details about this material. The company employs more than 150 people and has an in-house planning division with 24 employees. In the field of leisure facilities we are making use of the experience we gained during the many years we have been working in the fields of construction and production of high-class building elements. Our sports facilities are represented by Concrete® Sportanlagen GmbH.



Unit 2  
Adam Business Centre  
Henson Way  
Telford Way Industrial Estate  
Kettering,  
Northants, NN16 8PX / UK  
Phone +44/1536/415143  
Fax +44/1536/510471  
Email: [sales@playground-supplies.com](mailto:sales@playground-supplies.com)  
Website: [www.playground-supplies.com](http://www.playground-supplies.com)



### Concrete® Sportanlagen GmbH

[www.concrete-sportanlagen.de](http://www.concrete-sportanlagen.de)  
[info@concrete-sportanlagen.de](mailto:info@concrete-sportanlagen.de)

Ellhofen/Steinbiss-Strasse 15  
88171 Weiler-Simmerberg / Germany

Phone +49/8384/8210-90  
Fax +49/8384/8210-91

